

THE RITE, RITUAL AND THE CHRONOLOGY OF THE TELEȘTI-DRĂGOIEȘTI NECROPOLA FROM THE GORJ COUNTY

Gheorghe Calotoiu¹
muzeulgorjului@gmail.com

Keywords: *Hallstatt, tumular necropola, funeral inventory, ceramics, Gorj county.*

Cuvinte-cheie: *Hallstatt, necropolă tumulară, inventar funerar, ceramică, județul Gorj.*

Sumar: *În necropola de la Telești-Drăgoiești ritul funerar a fost unitar, incinerarea fiind proprie tuturor mormintelor. Privită însă în ansamblu și având în vedere aspectele esențiale, necropola de la Telești-Drăgoiești se înscrie organic în grupul Ferigile, caracteristic în Hallstattul târziu pentru zona subcarpatică meridională. Cât privește acele mici particularități (unele deja menționate), ele se explică atât prin faptul că necropola de la Telești-Drăgoiești se plasează la nivelul orizontului târziu al necropolei de la Ferigile, cât și prin aceea că, în cadrul unui grup ce evoluează pe o arie întinsă (cum este grupul Ferigile), diferitele comunități au și unele trăsături proprii, care se manifestă atât în ritul și ritualul de înmormântare, cât și în privința inventarului. Analiza detaliată a materialului descoperit arată că necropola a putut începe spre sau cândva la sfârșitul secolului al V-lea a. Chr., dar a evoluat sigur și în secolul IV a. Chr.; dacă a atins mijlocul sec. IV a. Chr. sau a depășit cu ceva această dată este însă greu de spus.*

Abstract: *In the Telești-Drăgoiești necropola, the funeral rite was unitary, the cremation being common to all graves. Overall and considering key issues, the necropola from Telești-Drăgoiești organically join the group Ferigile, characteristic to the Late Hallstatt in the southern Carpathian area. As for those small features (some already mentioned), they can be explained by the fact the necropola from Telești-Drăgoiești is placed in the later horizon of the necropola from Ferigile, and in that within a group evolving over a wide area (such as Ferigile group), different communities have some specific features, manifested both in the funeral rite and ritual, but also in the inventory. The detailed analysis of the material found shows that the cemetery could start to or once at the end of the fifth century BC, but surely evolved in the fourth century BC.; if it reached the middle of the fourth century BC or exceeded that date is difficult to say.*

By their structure, the tumuli from Telești-Drăgoiești necropola show the existence of 2 types of tumuli.

The first type of tumuli comprises the tumuli with an earth mantle. The existence of stones in their mantle which were brought here along with the earth

¹ **Gheorghe Calotoiu**, doctor în arheologie, C.Ș. I, Muzeul „Alexandru Ștefulescu” Tg. Jiu.

does not make us to include them in a different type. The earth mantle was yellow-grey or brown-grey in color. Most of the tumuli from necropola belong to the first type.

The second type has a small number of tumuli and their mantle is made of river boulders disposed like this: at the edge it was a row of river boulders and to the center where the tumb was the boulders were disposed on 3 or even 4 rows. The second type of mantle was also covered with earth.

We must underline the fact that the tumuli were strongly flattened and for this matter is hard to know their initial height. We can only suppose, taking into account the surface they had when they were studied, that, in most cases, the height is mostly their actual height. Although it belongs to the Ferigile Group, this necropola has 2 types of tumuli, not like the eponimus necropola (where all the tumuli had a stone mantle covered with earth). The fact that in the Telești-Drăgoiești necropola are 2 types of tumuli can be explained by the fact that in this area the stone is less frequent than at Ferigile².

The funeral rite. The funeral rite in the Telești-Drăgoiești was unitary, the incineration being used in all of the tumbs. This funeral rite is specific to the Ferigile, where the Telești-Drăgoiești necropola is included³.

The funeral ritual is different. First, before talking about the funeral rituals used in this necropola, we must make some things clear. In some of the tumuli appear traces of cremation in 2 or even 3 points, some of them very close to each other, some slightly apart. It is possible that these points represent tumbs. Still we don't have enough evidence to say that. On the other hand, the existence of some double tumbs in these cases can be determined only after the bone analysis. This analysis does not depend on us and it has not been made, with all our insistence.

We must say that in determining the types of the ritual were taken into account different elements. After the depositing way, there are 6 types of rituals some of them divided in other subtypes.

The 1st type has 2 variants: the first one with the depositing of the burnt bone on the antic ground and the second with the depositing of the burnt material in an urn. Every variant has the following subvariant:

- I a₁ - burnt material disposed on the ground and with ceramic inventory;
- I a₂ – remains placed on the ground, ceramics and metal pieces;
- I a₃ - only human burnt bones (tumulus 20 and tumulus 30);
- Ib₁ – the remains of the cremation disposed both on the ground and in an urn, the funerary inventory consist only in ceramic (T₄, T₂₈, T₄₇);
- I b₂ – the remains are on the antic ground, on an urn and the urn has some metal pieces in it (T₂, T₃, T₁₂).

The 2nd type has only 2 tumuli (T₁₅ and T₄₉), the burnt material was placed in an urn, which also had a part of the funeral inventory. For example, in T₁₅, in a

² Vulpe 1967, p. 15.

³ *Ibidem*, p. 22.

bowl, that functioned as an urn, were placed 2 types of spear. In T₄₉, along with the bowl used as an urn, were also placed 2 bowls and a weight spindle. It is obvious that in T₁₅ was buried a warrior and in T₄₉ a woman.

The 3rd type includes the symbolic tumbs or the symbolic inventory. This type has 2 variants:

- III_a tumbs without bones or inventory (T₈, T₉, T₅₁);
- III_b – tumbs without bones but with ceramic material (T₁₃, T₁₄).

In these tumuli, built in the memory of the some warriors that were killed far away from their community, only ceramic was placed.

The IVth type includes the stone „platform” tumbs. It is in the case of the T₁₈, T₂₁, T₄₂, T₄₄, T₄₅. The platform consist in a stone bed on which a part of the cremation material was disposed and the other was placed on to the ground. Sometimes, the ceramic inventory was placed on the stone bed (T₁₈, T₂, T₄₅). In tumuli 42 and 45, the river stones weren't clearly disposed, they only marked the incineration tumb.

The Vth types includes tumbs with a stone ring: T₂₉, T₃₇, T₄₆, T₅₃. In all these tumbs the boulders are disposed in the shape of a circle, marking the tumb. In tumulus 29 and 46 the stones formed rings of 3,25x2,65 m and 1,5x0,65 m. In the center of these rings, on a 0,42x0,35 m and 0,4x0,35 m area, were found fragments of burnt bones, ash and coals brought from the funerary pile. Inside the stone ring and near the burnt bones, in T₂₉ was found a handle –tube from a spear and in T₅₃ a spear top. Without a doubt these tumbs belonged to warriors, situation which was very frequent in the Telești-Drăgoiești necropola.

The VIth type contains tumbs in witch the burnt bones, the coals and ash, from the funerary pile were disposed in the shape of a little cairn. It's the case of the T₂₅, T₂₆, T₂₇, T₃₁, T₃₂, T₃₉, T₄₁ and T₅₄. In tumulus 26 appears that the bones were put in a little hole, considering the depth of the hole compared to the tumulus thickness. In this tumulus were found 2 bowls with traces of a secondary burning, a bronze bracelet and a small bronze pendant in a bell shape. Most likely the tumb belonged to a woman. In T₅₄, near the bones, was found a bowl with the rim up and then another one with rim down. Along the bones there was a little knife, a fragmentary jar and 2 pieces of cinders.

In the Telești-Drăgoiești necropola no funerary pile was found, fact that shows us that the incineration was made elsewhere. We must mention the fact that in some situations, in witch the quantity of burnt bones, coals and ash from the pile and put in the tumulus is big, it forms a kind of „platform” with a tickness between 0,15-0,3 m. In tumulus 10, at 0,42 m depth, on an area of 2,22x1,32 m, was found a lot of ash, coals and burnt bones and this layer was of 15-20 cm thick. Between the burnt bones was found a spear, a knife and a rivet sword. In the same complex were found a vessel with 2 handle, a bowl, 2 cups, a jar and a mug. This tumb is the richest in the necropola. It belonged to a warrior. In T₆, the „ platform” with the cremated remains had the dimensions of 80x90 cm and a tickness of 29 cm. The funerary inventory consist of a sword, bowl fragments, bowls with traces of secondary burning. In T₅₀, the layer of

cremation remains was of 2,1x1,15 m and of 22 cm thick. In the south-western part of this layer was found a battle knife, 2 bowls, a cup, a mug and a fragmentary jar-like vessel. We must underline that in all these tumbs, in which appears a compact quantity of cremated remains, there are no traces of a crust to suggest the burning in that place. Taking into account the rich funerary inventory we know for a fact that they belonged to high rank people, mostly rulers and so the care to bring so many remains from the funerary pile is understood. The layer of this cremated remains is bigger in thickness in the high-rank people than in the tumbs of normal people. Without following a specific rule, this is clear the fact that all this cremated remains are characteristic to rich tumbs, warrior tumbs, some of them being tumbs for high rank people.

The situations show that the Telești-Drăgoiești necropola indicate some particularities, compared to the necropola from Ferigile. These particularities appear in the tumuli construction and also in the depositing way used in the tumbs. The Telești-Drăgoiești necropola is included in the Ferigile group, specific to Late Hallstatt for the Subcarpathian Eastern Zone. As for those small particularities (some of them already mentioned) they are explained by the fact that the Telești-Drăgoiești necropola is dated to the Late Ferigile Group but also the local communities from Telești-Drăgoiești had their specific characteristics which show themselves in the funeral rite, ritual and inventory.

The necropola chronology. During the presentation of the archeological inventory found in the Telești-Drăgoiești necropola we tried, as possible, to put into evidence the elements of timing which are found through analysing different archeological categories and through analogies in archeological literature. So, we will try to arrange the information chronologically, trying to establish a chronology for the whole necropola, as close to reality as possible. Also, with the help of the ceramics and the metal pieces it is possible to place in time some tumbs. We must underline that due to the scarcity of the funeral inventory in most of the tumbs, the chronological timing in the necropola is hard to be made, if not impossible. But every archeological discovery has some “clear” elements on which the chronology is determined. These elements are also present in the Telești-Drăgoiești necropola.

The ceramics, the most present in the Telești-Drăgoiești necropola, represents the first elements of chronology, through various aspects of the vessels (types, sizes, color). The Telești-Drăgoiești necropola belongs to the Ferigile Group and so we will make a comparison between the two.

Firstly, the Telești-Drăgoiești ceramics is poorer in shapes than the one from Ferigile. At Telești-Drăgoiești the outside bowls and thronconic bowls were not found. Also, the thronconic cups with button and heightened handle and the ornated ones are not present. So, no matter what horizontal strategy from Ferigile is used the first one or the second one the missing category from Telești-Drăgoiești necropola indicates a sensitively later timing of the analysed necropola.

The Telești-Drăgoiești ceramic has rather close resemblances with the IIIB Ferigile phase ceramic. That was common ceramics that had Latène elements. About the IIIrd phase from Ferigile, Al. Vulpe says that “it is for sure then the Ist and the IInd phase, no matter their order”⁴.

The fact that, compared to Ferigile, the ornaments from Telești-Drăgoiești are few, but they are present on a small numbers of vessels, which is yet another reason for the late timing of this necropola. In the ceramics category, an important thing to mention are the jar like vessels witch are shorter and rounder at Telești-Drăgoiești, witch is also an element of the late datation of this necropola. The same clue is offered by the carefully aspect of the Ferigile ceramics. The total lack of the Basarabi culture ornaments (which are present at Ferigile) shows that between the end of this culture and the beginning of the Telești-Drăgoiești is a long period of time⁵.

Many important elements of the Telești-Drăgoiești ceramics, witch are not present at Ferigile have to be presented. So, at Telești-Drăgoiești, are frequently found vessels, mostly bowls with a ring like bottom or a pedestal like bottom specific to the IVth–IIIrd centuries BC - at Ferigile this element is not present. The alveole girdle-vertically or horizontally disposed and lowered down to the middle of the vessel, although appears at the end of Ha. D is specific to Latène period. This type of girdle is present on a jar like vessel at Telești-Drăgoiești. Just about in the same phase it is found at Sanislău⁶ and at Coțofenii de Jos appears in the second half of the IVth century BC⁷. At Ferigile the vertical or the horizontal girdle is not met.

Without being too numerous, grey vessels-specific also to Latène appear at Telești-Drăgoiești in tumulus 25, T₂₆ (bowl, associated with a bracelet from the IVth–IIIrd centuries BC), T₂₇ (two small vessels), T₂₈ and T₄₀. Dark grey vessels appear in T₄₅ and T₄₈. Most part of the dark grey vessels from necropola are made of a high quality paste than the reddish-brown ones. We underline the fact that at Ferigile the grey ceramics is not mentioned. In the end of the ceramic presentation we say that at Telești-Drăgoiești was also found a grey bowl made at a slow wheel (T₄₃), the ceramic made by wheel at Ferigile not being present. So, the ceramic from necropola is dated mostly in the IVth century BC.

The weapons found at Telești-Drăgoiești are difficult to date in time. We must underline that throught the Ferigile discoveries and mostly by analogies, the swords and the knives used in the battles from Telești-Drăgoiești can be dated just about in the same time as the ceramics presented above. The part of the bit from the first half of the IVth century BC⁸.

⁴ Vulpe 1967, p. 87.

⁵ *Ibidem*, p. 56.

⁶ Nemeti 1982, p. 133, fig. 6/1.

⁷ Zirra et alii 1993, p. 115, fig. 26/12.

⁸ *Ibidem*, p. 138, fig. 42/3.

The bracelet is the most important piece of jewelry found in T₂₆, probably imported from Greece, is dated, mostly through analogies from Dobrodjea, in the IVth century, but also extended in the IIIrd century BC⁹.

Taking into account the types of inventory, their disposal in the tumbs, but also the mentioned analogies, we can say that the Telești-Drăgoiești necropola can not be dated in the Vth century BC. The detailed analysis of the inventory from the necropola shows that the Telești-Drăgoiești might have started at the end of the Vth century BC, but surely evolved in the IVth century BC or if it passed the first half is hard to tell. Due to the scarcity of the funeral inventory, a horizontal layering is pointless. Still, the latest burials seem to be the ones with high quality grey ceramics, so being the case of T₂₅, T₂₆, T₂₇, T₂₈, T₄₀, T₄₃. Hypothetically, we can say that T₄₃, where was found the only vessel (a bowl) made by wheel, is the latest, along with T₂₆ (with the bronze bracelet) and T₂ with the horse bit. The horse bit from T₂ can be earlier in time than the one from Coțofenii din Dos.

In the end, we can say that the Telești-Drăgoiești necropola is included in the Ferigile group (also named Bârsești-Ferigile), but it belongs to a late phase than the one from Ferigile. We can affirm that the necropola from Telești-Drăgoiești is the most important archeological site researched in the Subcarpathian zone of Oltenia for that time. The importance of this necropola is also shown by the fact that it presents the evolution of local culture in the subsequent phase of the Ferigile necropola.

(Traducere făcută de autor)

Abbreviations and bibliography

Dacia, NS		Dacia. Revue d'archeologie et d'histoire ancienne, Nouvelle Série. București.
SCIV		Studii și Cercetări de Istorie Veche. București.
Bujor	1955	Bujor Expectatus, <i>Săpăturile de salvare de la Murighiol în SCIV, VI</i> , p. 571-580.
Bujor	1958	Bujor Expectatus, <i>O eto-dakijoi kulture v Murigiole în Dacia, NS, II</i> , p. 125-142.
Nemeti	1982	I. Nemeti, <i>Das spathallstatzeitliche Graberfeld von Sanislău în Dacia, NS, XXVI</i> , 1-2, p. 115-144.
Vulpe	1967	Al. Vulpe, <i>Necropola hallstattană de la Ferigile (Monografie arheologică)</i> .
Zirra et alii	1993	Zirra Vlad Vintilă, Alexandrescu Petre, Conovici Niculae, Trohani George, Gheorghe Petre, Găță Gheorghe, <i>La station getique fortifiée de "Cetatea Jidovilor" (Coțofenii din Dos, dép. de Dolj) în Dacia, NS., XXXVII</i> , 1-2, p. 79-158.

⁹ Bujor 1955, p. 575, pl. 1/11; Bujor 1958, p. 135, fig. 7/11.

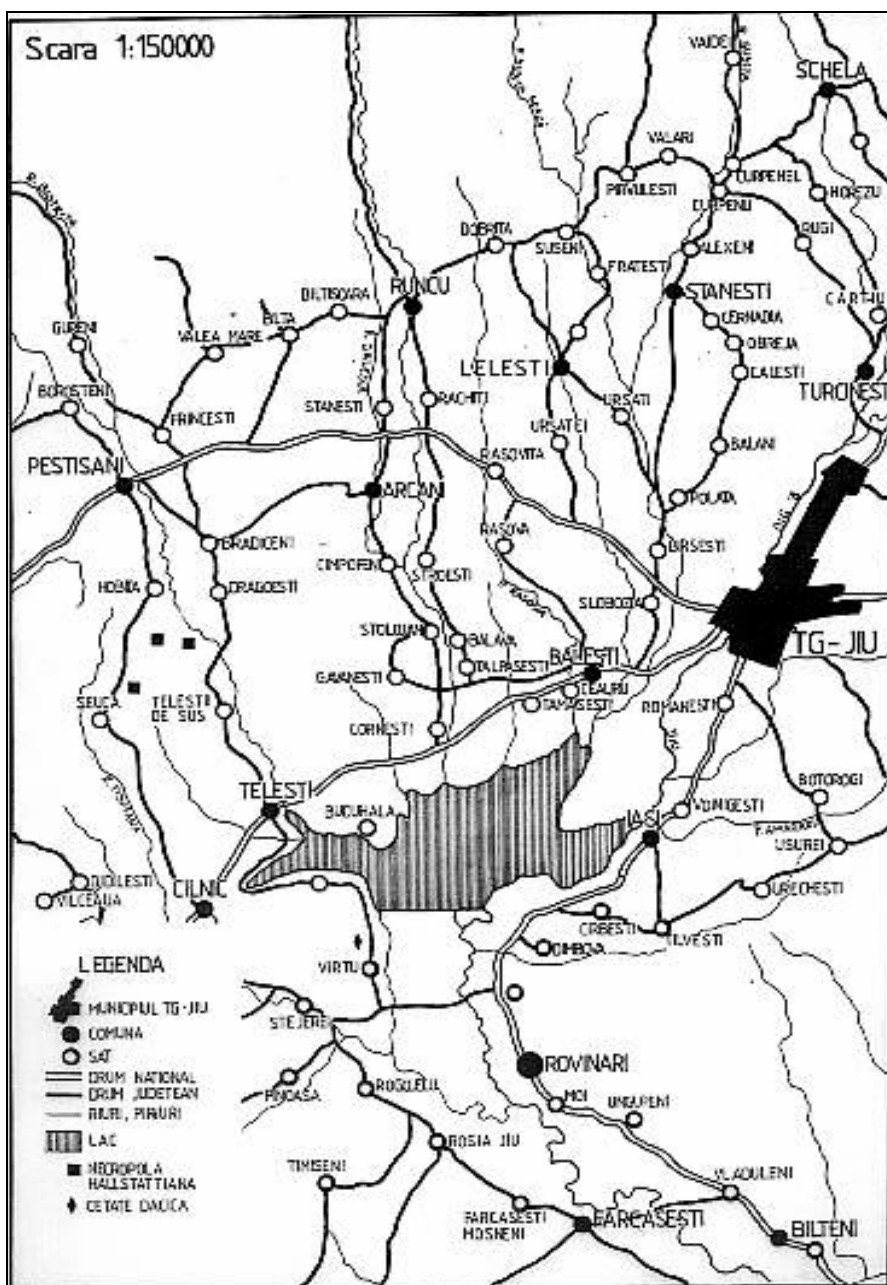


Fig. 1 Map locating the necropola from Telești-Drăgoiești, Gorj county
 Harta localizării necropolei de la Telești Drăgoiești, județul Gorj

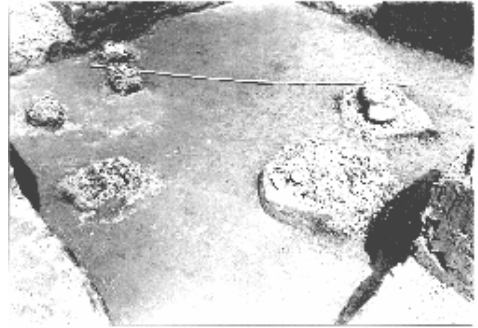
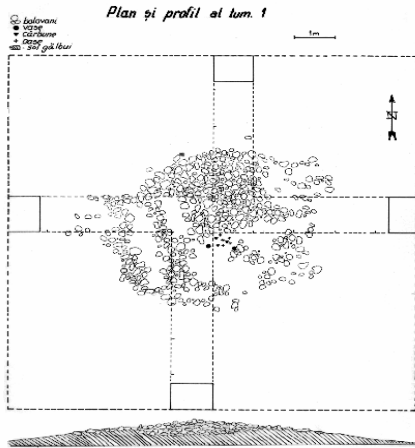


Fig. 2 *Telești-Drăgoiești*. Tumulus no. 1 (up) and no.2 (down)
Telești-Drăgoiești. Tumulus 1 (sus) și 2 (jos)

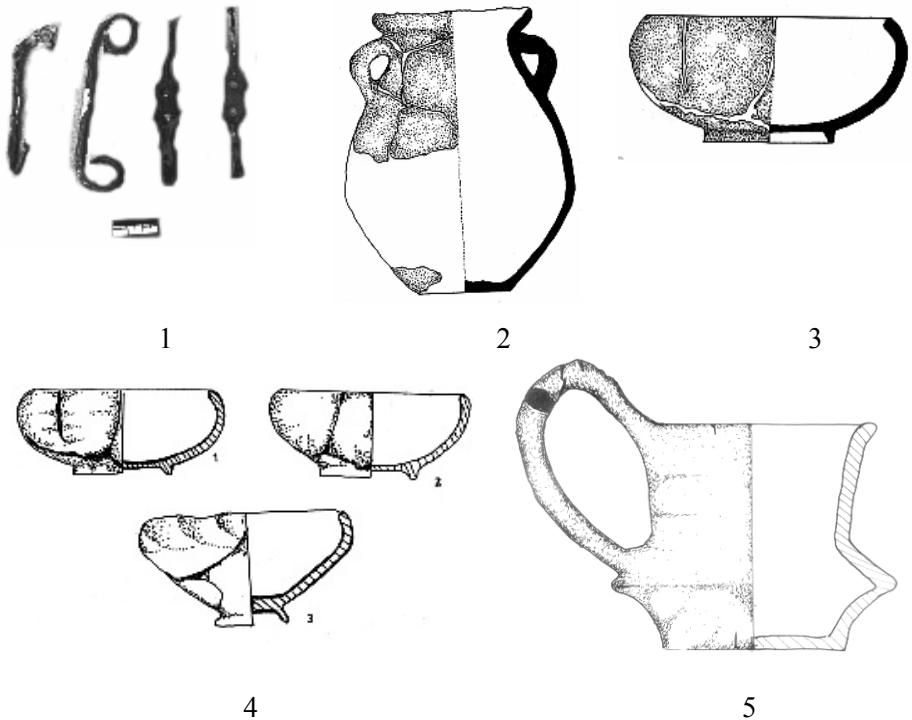
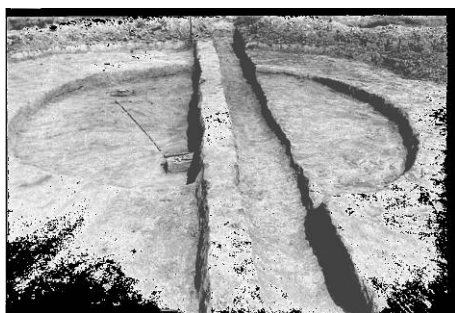
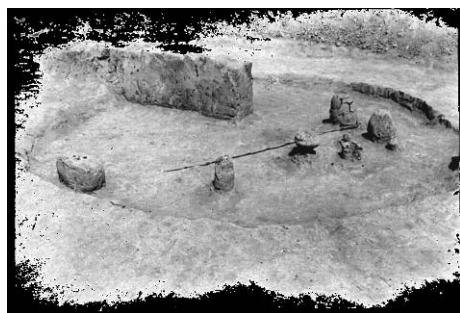


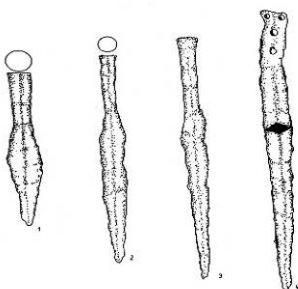
Fig. 3 *Telești-Drăgoiești*. 1 – Horse bits and psalia; 2-5 – pottery
Telești-Drăgoiești. 1 – Zăbale și psalii; 2-5 – vase



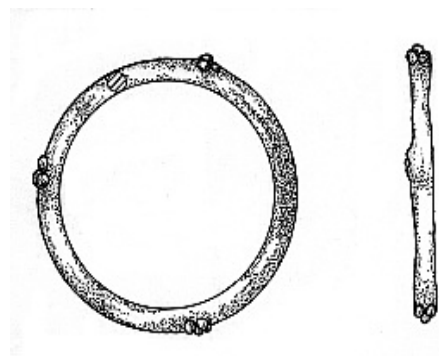
1



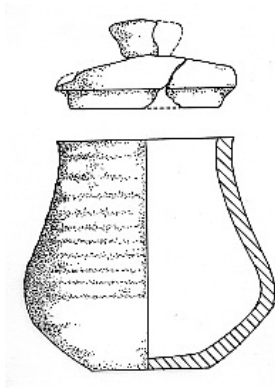
2



3



4



5

Fig. 4 *Telești-Drăgoiești*. 1 – Tumulus no. 16, 2 – Tumulus no. 18, 3-4 – metal pieces; 5 – pottery
Telești-Drăgoiești. 1 – Tumulul 16, 2 – Tumulul 18, 3-4 – obiecte din metal; 5 – ceramică